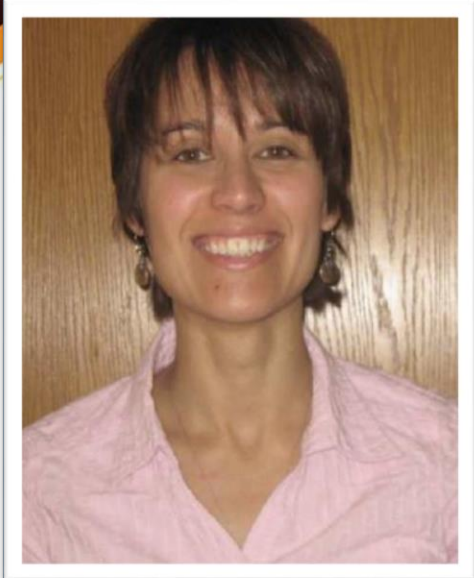




Carey completed her Master's Degree in Occupational Therapy at the University of Western Ontario and achieved her undergraduate degree in Applied Science-Child Studies from the University of Guelph. Prior to joining DMAREhability in 2003, Carey gained valuable clinical experience having worked in both a Nursing Home and hospital setting. Her work in the hospital provided her with the opportunity to work with a vast age group, in acute care, inpatient and outpatient rehabilitation. Carey's combined education and employment experience have provided her with the opportunity to gain valuable knowledge and expertise assisting individuals who have sustained serious, complex injuries including; neurological, orthopedic and soft tissue. She is a certified KEY Method Whole Body Assessor and is a member in good standing with the College of Occupational Therapists of Ontario (COTO), Ontario Society of Occupational Therapists (OSOT) and National Board of Certification in Occupational Therapy (NBCOT).



CAREY DUNCAN

Occupational Therapist
 MCIScOT, Reg (Ont),
 BASc

KITCHENER OFFICE:

1601 River Road East, Suite 311
 Kitchener, ON N2A 3Y4

HEAD OFFICE:

1151 Florence Street, Suite 300
 London, Ontario N5W 2M7
 Tel: (519) 452-0046
 Fax: (519) 452-1413
 Toll-Free Tel: 1(866) 309-0046
 Toll Free Fax: 1(866)899-7460
 Email: info@dmarehab.com

For more information, please visit:
WWW.DMAREHABILITY.COM



EDUCATION

- Master of Clinical Science, Occupational Therapy, University of Western Ontario, London, ON (2000)
- Honours Bachelor Of Applied Sciences, Child Studies University of Guelph, Guelph, ON (1998)

SERVICES

- In-Home Assessments & Treatment
- Assessment of Attendant Care Needs-Form 1
- Hospital Discharge Planning & Coordination
- Ergonomic Assessments
- Physical Demands / Job Site Analysis
- Cognitive Demands Analysis
- Return to Work Program
- Job Coaching
- Functional Abilities Evaluations-Key Method Assessor-

AREAS OF PRACTICE

- Neurological Disorders-Traumatic & Acquired Brain Injury
- Musculoskeletal/Soft Tissue
- Orthopaedics
- Geriatrics
- Paediatrics

CAREY'S SERVICE AREAS

